

# Why Data Vaulting won't work on it's own!

The 10 Key questions you need to ask when looking at a Data Resilience solution!

ADAM  
CONTINUITY

In the modern business world IT Directors are constantly being challenged by the need to effectively and securely manage ever increasing data volumes. There are now many companies offering a range of data services to businesses, the key is to ensure that in the event of a catastrophic failure you have made the right choice. This could be the single most important business decision that you have to make.

To make the right decision you have to firstly ask the **key** questions that will give you the 'Peace of Mind' you are looking for. That's why we have produced this guide. It will assist you in determining your real requirement for ensuring the availability of your business critical data.



## KEY QUESTION 1

### WHAT ARE YOUR OBJECTIVES?

It sounds obvious doesn't it? But many people jump straight to a solution, without fully considering what they really need.

**There are usually seven key performance areas to consider:**

- Increased Application Performance
- Reduced Recovery Time Objective (RTO)
- Improved Recovery Point Objective (RPO)
- Ease of Recovery
- Budget
- Security & Encryption
- Virtualisation

An honest assessment of each of these will start shaping the types of products and solutions that you should consider as part of your data management and control processes.





## KEY QUESTION 2

### WHAT ARE THE SOLUTIONS?

#### Off-site Data Vaulting

One of the most popular current product offerings are 'Vaulting' services. Vaulting services have become popular because they offer many significant advantages over more traditional backup methodologies, with security and encryption protecting your data.

Tape rotation and archiving has many inherent problems – should you be entrusting business critical data to tape, a notoriously unreliable media?

Off-site data vaulting usually entails the installation of agents onto the selected servers within your estate, then those agents performing nightly backups, via the Internet, to the provider's data centre.



## KEY QUESTION 3

### IN THE EVENT OF A CATASTROPHIC FAILURE HOW WOULD OFF-SITE DATA VAULTING ASSIST YOU IN RECOVERING THE SERVER?

This is highly practical and potentially business critical issue. If the solution merely stores your data, how would it be returned to you?

What media would be used? If it was DVD or tape, in what format would the data be – almost without exception it would be in some form of archive, and would need to be parsed by the backup agent in order to make it useable.

Once you have your data back, who is going to provide you with some hardware to enable you to return to work?

#### How long will this whole process take?

There is more to consider, if you are subscribing to a solution that offers a total volume of protected space within a store, what happens when you reach that limit?

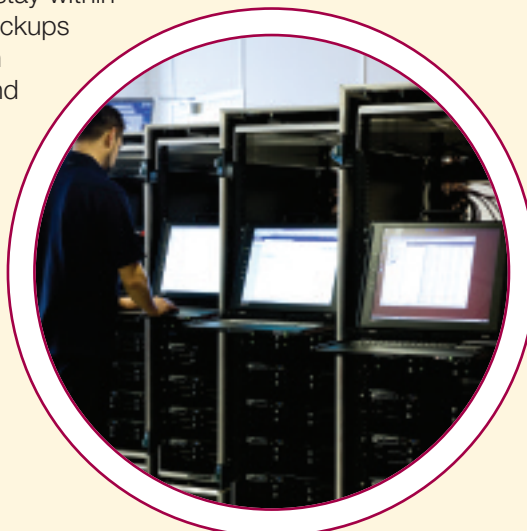
For example, if you are subscribing to 1TB of space, and your total full backup takes 750GB, then after a few months of incremental backups you will exceed your total storage allowance – what happens then?

Could you afford to start deleting archived backups to stay within budget, or would you have to take ownership of the backups and perform your own archives to tape? If you do, then consider revisiting your original objectives. You could find yourself performing the very task that you purchased a Vaulting solution to move away from!

#### Off-site Data Replication

Off-site Data Replication can be a very cost effective way to maintain a highly resilient local dataset.

Adam Continuity's Off-site Data Replication Solution utilises best of breed technologies to deliver cost effective and time efficient data replication, both within your own environment and at a secure data centre within Adam's estate.





## KEY QUESTION 4

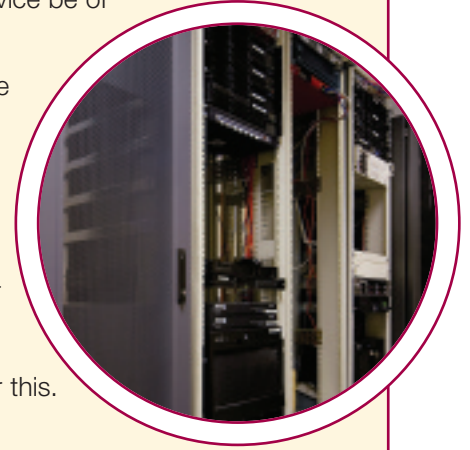
### SHOULD YOUR DAILY BACKUPS BE TO A LOCAL DISK AND MIRRORED OFFSITE?

Why would daily backups to a local disk that was mirrored to an offsite device be of benefit to your business?

If you suffered a failure at 5:00 pm, to what point in time would you be able to restore...last night, last Friday night?

What would happen if the last backup tape had become corrupted, or the data could not be retrieved?

Revisiting your original objectives, how much more useful would it be if your local device contained your last 6 months worth of backups, together with a smart indexing system that allowed you to restore any of your individual files or even the complete server, from any point in time from the backup set? Modern sophisticated off-site data vaulting solutions can offer this.



## KEY QUESTION 5

### SHIP TO SITE OR RECOVERY SUITE?

Would you benefit from a service that is able to deliver fully working servers to a location of your choice, already pre-installed with your data? Alternatively you could subscribe to a service that provides you with an Office Recovery Suite at a convenient local site, again already configured with your data.



## KEY QUESTION 6

### WHO MANAGES YOUR ARCHIVES?

Important questions, where are your archives, who manages them and how could you retrieve them?

It can be really advantageous if the supplier of your off-site mirror can also take care of all your long term archival needs, without the need for any direct intervention from yourself.



## KEY QUESTION 7

### HOW WOULD YOU RESTORE DATA FOLLOWING A SERVER FAILURE?

What disruption would there be to your business if you had to restore your data? The modern approach is to offer a solution where you don't have to restore your data at all!

You should always ensure that there are always two instances of your critical data available in your own data centre, at all times. This is further protected with a third instance of your data available in a secure, remote, data centre.

Again review your objectives, this type of solution ensures that you have no restore times to worry about; minimal loss of 'work' due to restoring from hours old, or worse – days or even weeks old, backup tapes.



## KEY QUESTION 8

### DO YOU NEED VAULTING OR END-TO-END SOLUTIONS?

If your company has aggressive RTO and RPO requirements, then Off-site Data Replication is certainly something that you should consider.

It is now possible to combine a data vaulting solution with an off-site replication solution, and have those services delivered by a leading provider of Mobile Disaster Recovery Solutions.

In the event of a minor local failure do you need to 'get back to work' as quickly as possible, with the minimum of fuss? Your supplier must be able to dispatch pre-built hardware containing your data sets within as little as an hour of being invoked.

Adam Continuity's Off-site Data Replication Solution utilises best of breed technologies to deliver cost effective and time efficient data replication, both within your own environment and at a secure data centre within Adam's estate.

Adam Continuity's Off-site Server Replication can also recover your entire server or servers in the event of a failure using the latest in Virtualisation technology. This allows your Recovery Solution to be hosted at the data centre synchronised with your data set ready for production with the option to recover physical to virtual, virtual to physical, virtual to virtual.



## KEY QUESTION 9

### CAN YOU REHEARSE YOUR SOLUTION?

What use is the solution if you can't be sure it will work? Regular rehearsals are vital and you should be able to hold them at your suppliers' site or a site of your choice – at no extra charge. They should be able to be scheduled when you want them, include Recovery Specialist resource and be documented.



## KEY QUESTION 10

### HOW DO YOU SELECT A SUPPLIER?

Selecting a supplier that can work with you and your team is clearly a very important decision for any organisation. You need to ask the right questions and be satisfied that response and the product recommendations meet your objectives and not the suppliers.

Your supplier needs to be someone that you can trust and rely on to be there for you. At Adam Continuity we believe we offer a range of product and solutions including the rapid delivery of equipment, together with experienced recovery specialists.

We know there is so much more to business continuity than just disaster recovery – why not give us a call with your 10 key questions? We'd be only too happy to show you how our end-to-end solutions offer you a true business continuity that ensures the integrity of your critical business data and in the event of an incident will have you 'back to work' in the minimum period of time, with the minimum of fuss.

**For further information about our services please contact Wendy Mills:**

**Tel:** 01256 378 001 **Email:** [wmills@adam.co.uk](mailto:wmills@adam.co.uk)

**[www.adam.co.uk](http://www.adam.co.uk)**